

Registration Information

Step 1: Choose your program(s) and pick 2-3 dates from your scout calendar. Programs are usually held Monday through Friday after school. Saturday and Sunday dates subject to staff availability.

Step 2: E-mail the Education Program Manager, Ken Elkins at kelkins@audubon.org or call (203) 264-5098 x308 with the following information:

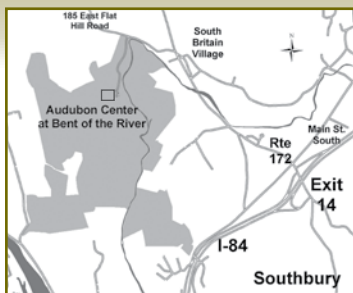
1. Troop number & mailing address
2. Number and age of scouts
3. Time of arrival
4. Preferred program(s) and date(s)

*You will receive notification confirming date availability.

A place to explore & discover

- 700 acres of diverse ecosystems and habitats including unfragmented forest, grasslands, old meadows, vernal pools and red maple swamps
- 15 miles of hiking trails
- Variety of year round educational programs for children and adults

Sanctuary open 7 days a week from dawn to dusk.



Directions:

From I-84: Take exit 14 and go north on Route 172 for about 1 mile. Look for the South Britain General Store and South Britain Congregational Church on the left. At the General Store turn into East Flat Hill Road. The entrance to the Bent of the River is on the left, .4 of a mile from Route 172. Look for a green mailbox on the left.

Audubon CENTER BENT OF THE RIVER

SCOUT PROGRAMS



Scout groups have **MANY** choices when scheduling a visit to the Audubon Center at Bent of the River!

185 East Flat Hill Road
Southbury, CT 06488
203-264-5098
bentoftheriver.audubon.org

Our Scout Programs include Hands-on activities and an outdoor hike to meet some or all the requirements to earn pins and badges. Programs are scheduled after-school and on Saturdays. If you don't see a program you're interested in listed below, it doesn't mean the program isn't available, just ask! For more information, contact Ken Elkins, Education Program Manager at 203-264-5098 x308 or by email, kelkins@audubon.org.



Tiger Cub Scouts

LET'S GO OUTDOORS
LEARN ABOUT ANIMALS
FEED THE BIRDS



Wolf Cub Scouts

BIRDS
OUTDOOR ADVENTURE
YOUR LIVING WORLD



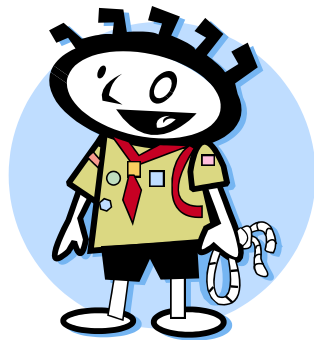
Bear Cub Scouts

SHARING YOUR WORLD WITH WILDLIFE
WATER & SOIL CONSERVATION



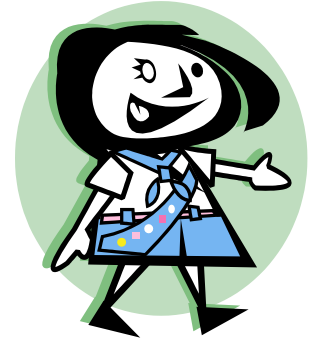
Webelos Activity Pins

FORESTER
GEOLOGIST
NATURALIST
CONSERVATION PROJECT



Brownie Try-Its

ANIMALS
ECO-EXPLORER
OUTDOOR ADVENTURE
WATCHING WILDLIFE
WATER EVERYWHERE



Junior Badges

EARTH CONNECTION
FINDING YOUR WAY
YOUR OUTDOOR SURROUNDINGS
WATER WONDERS
WILDLIFE

PROGRAMS FOR THE WHOLE FAMILY

Schedule a family fun night or weekend program for the entire Pack or Troop! Night Hikes are popular year-round, or try a Peeper Prowl in the spring, or Owl Prowls and snowshoeing are available in the winter!